

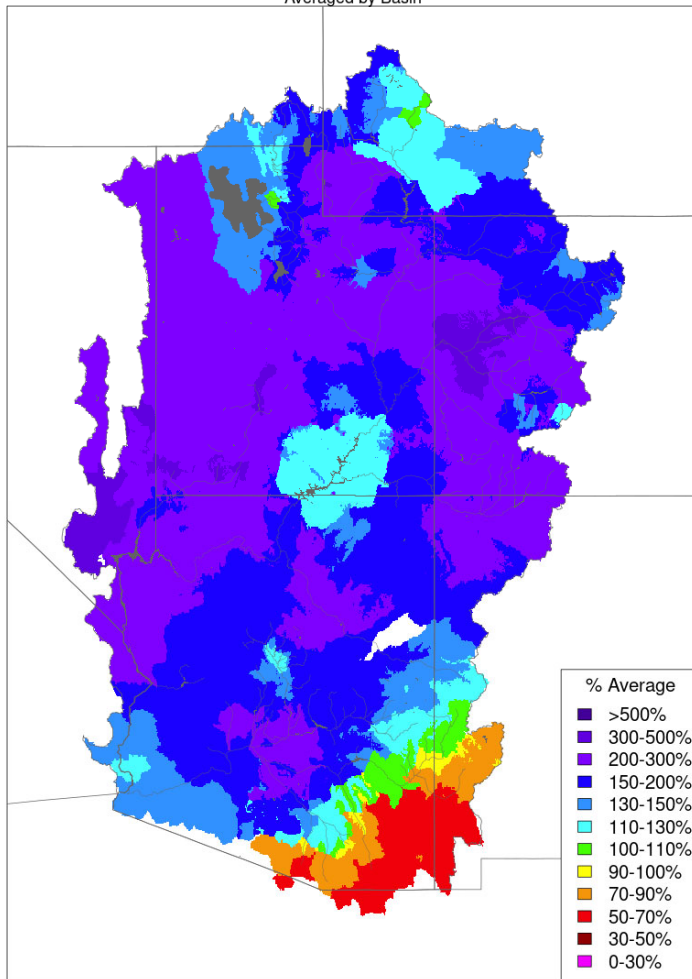


Operations Report

January 18, 2021

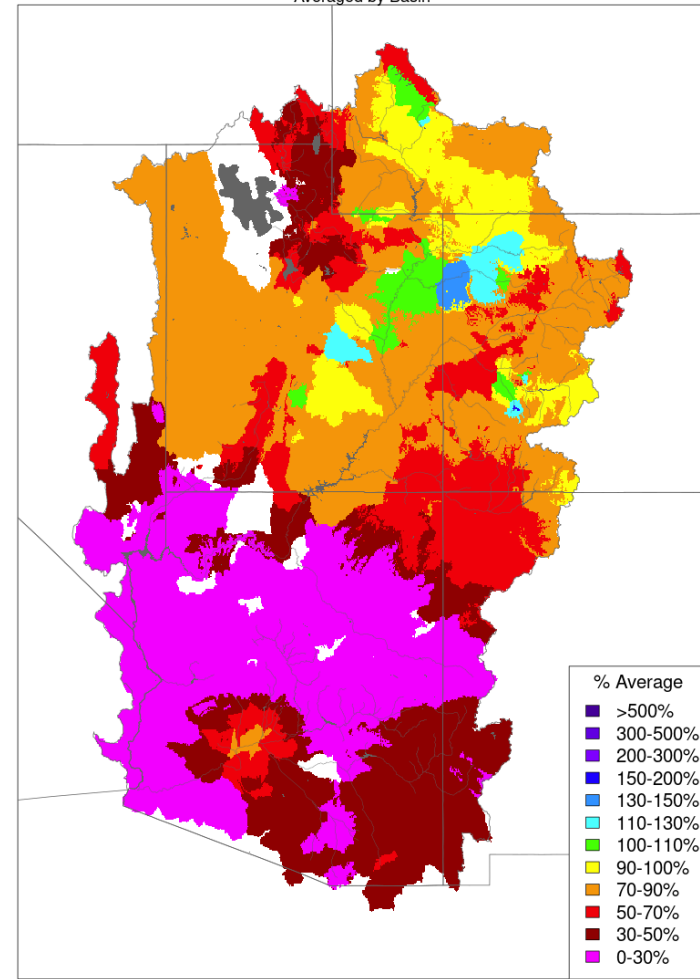
Monthly Precipitation

Monthly Precipitation - December 2021
Averaged by Basin



Prepared by NOAA, Colorado Basin River Forecast Center
Salt Lake City, Utah, www.cbRFC.noaa.gov

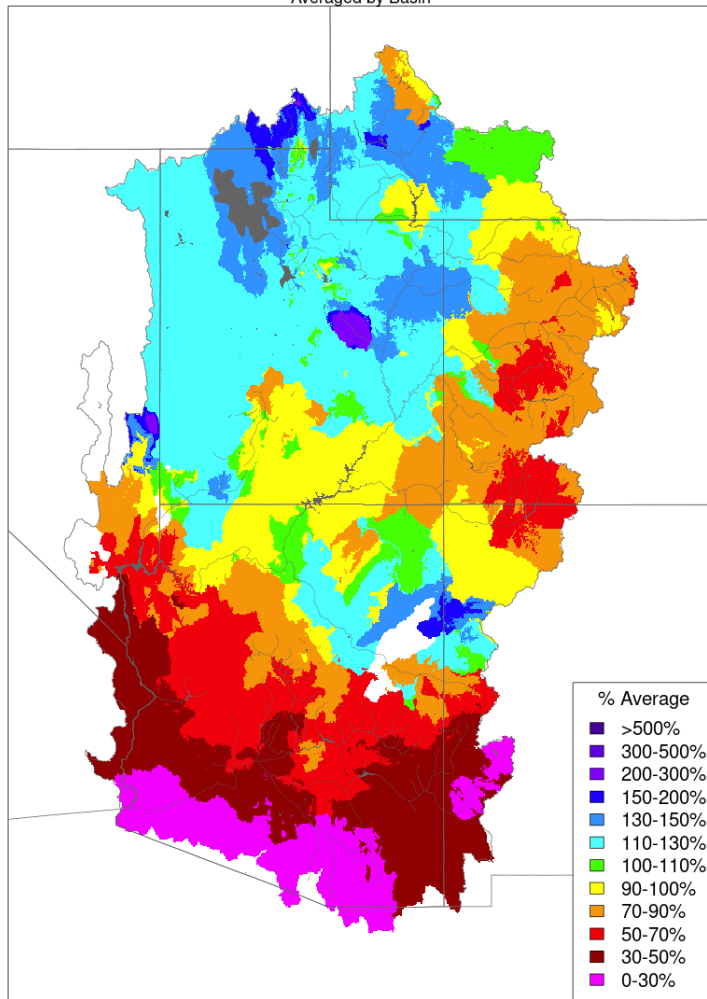
Monthly Precipitation - December 2020
Averaged by Basin



Prepared by NOAA, Colorado Basin River Forecast Center
Salt Lake City, Utah, www.cbRFC.noaa.gov

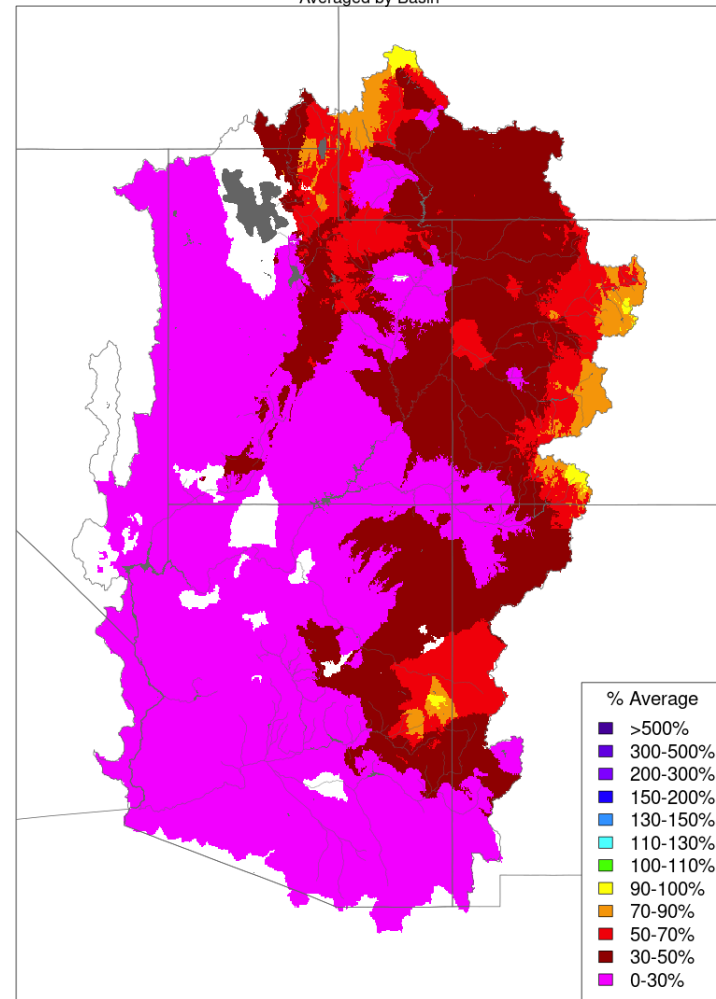
Seasonal Precipitation

Seasonal to Date Precipitation, October 01 - November 30 2021
Averaged by Basin



Prepared by NOAA, Colorado Basin River Forecast Center
Salt Lake City, Utah, www.cbrfc.noaa.gov

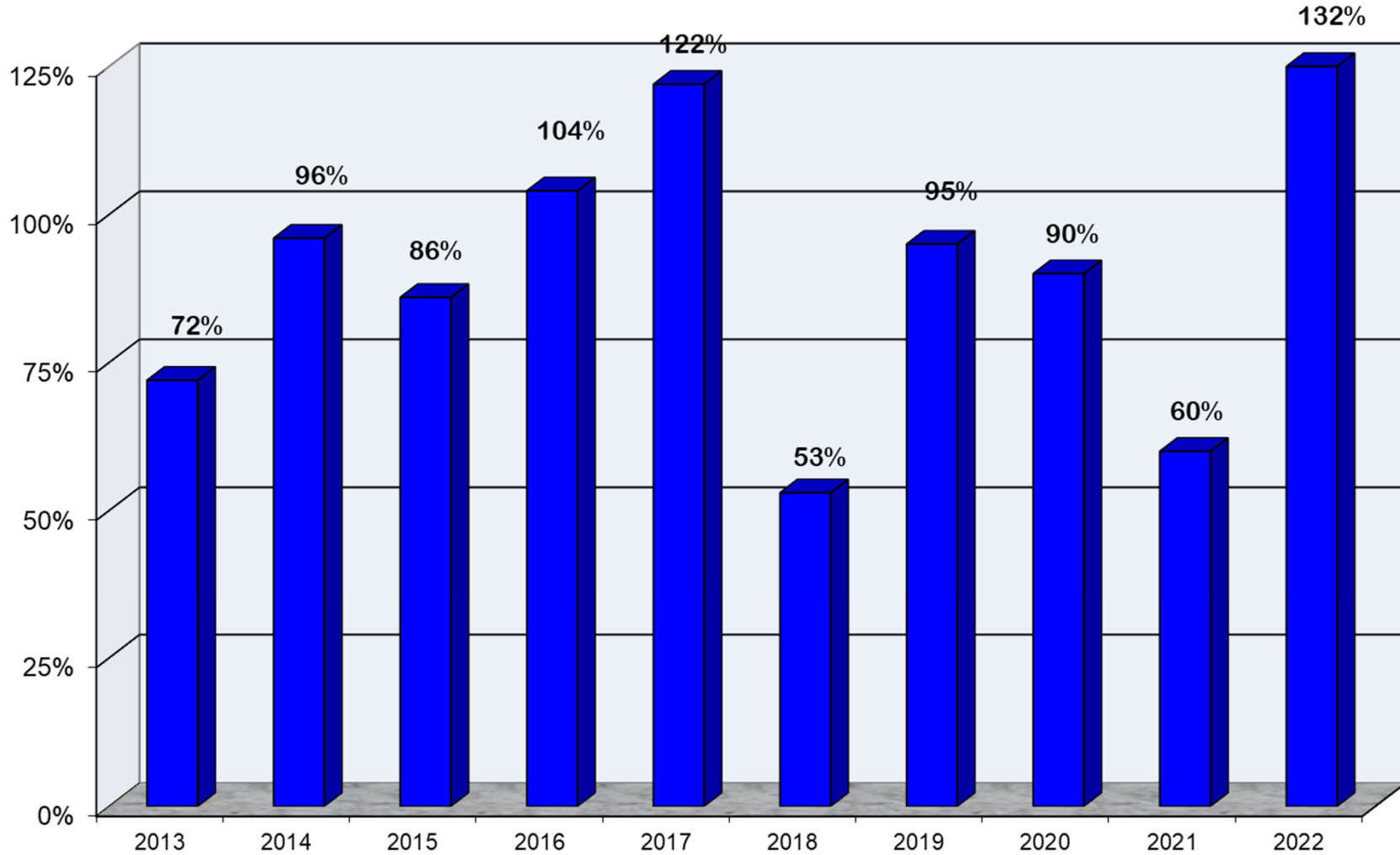
Seasonal to Date Precipitation, October 01 - November 30 2020
Averaged by Basin



Prepared by NOAA, Colorado Basin River Forecast Center
Salt Lake City, Utah, www.cbrfc.noaa.gov

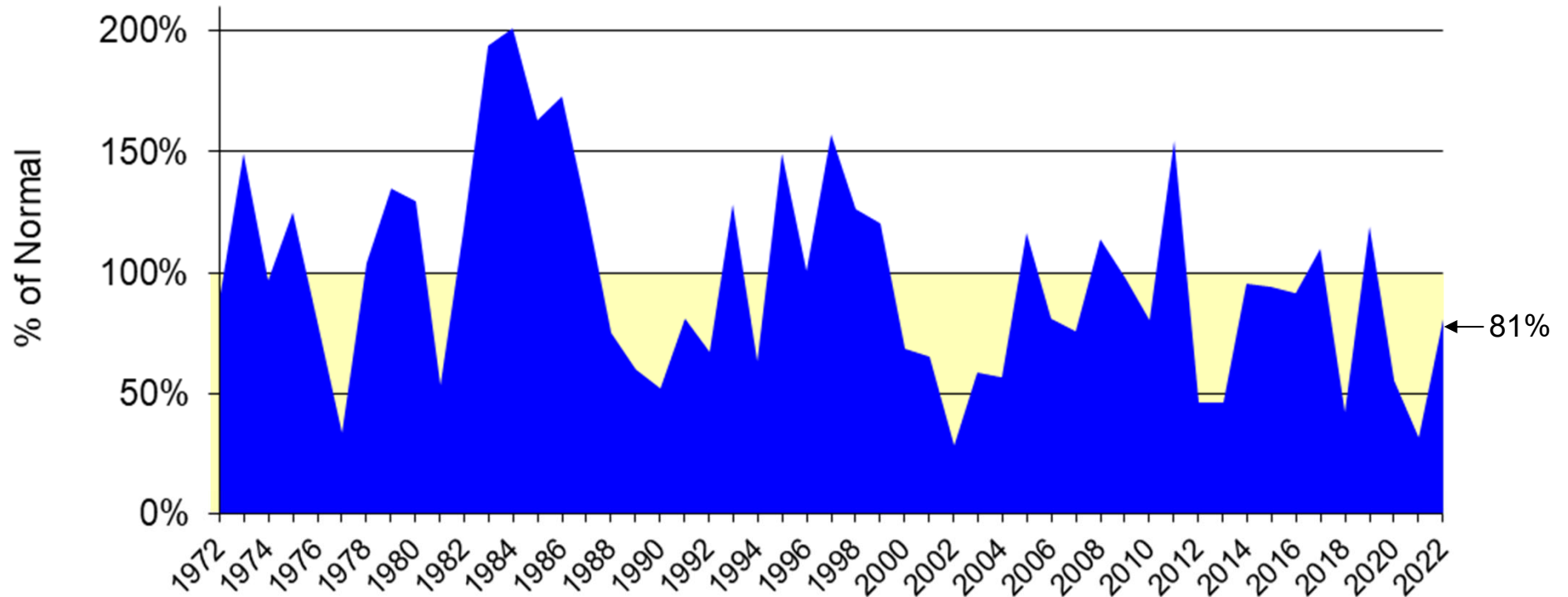
Upper Colorado River System

Water Year Precipitation to Date
(Average based on 1981 - 2010)



January 18, 2021

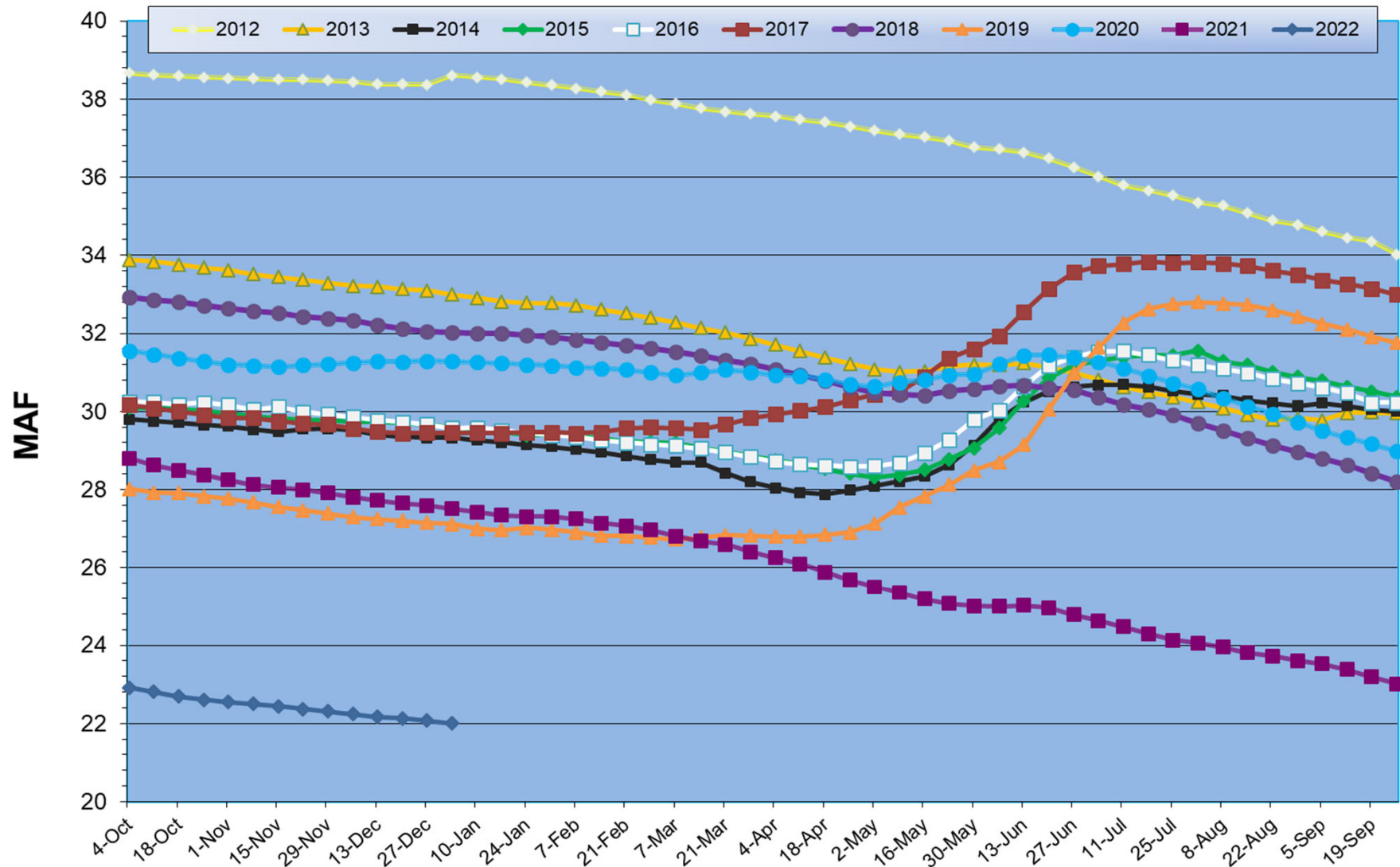
Lake Powell Annual Unregulated Inflow



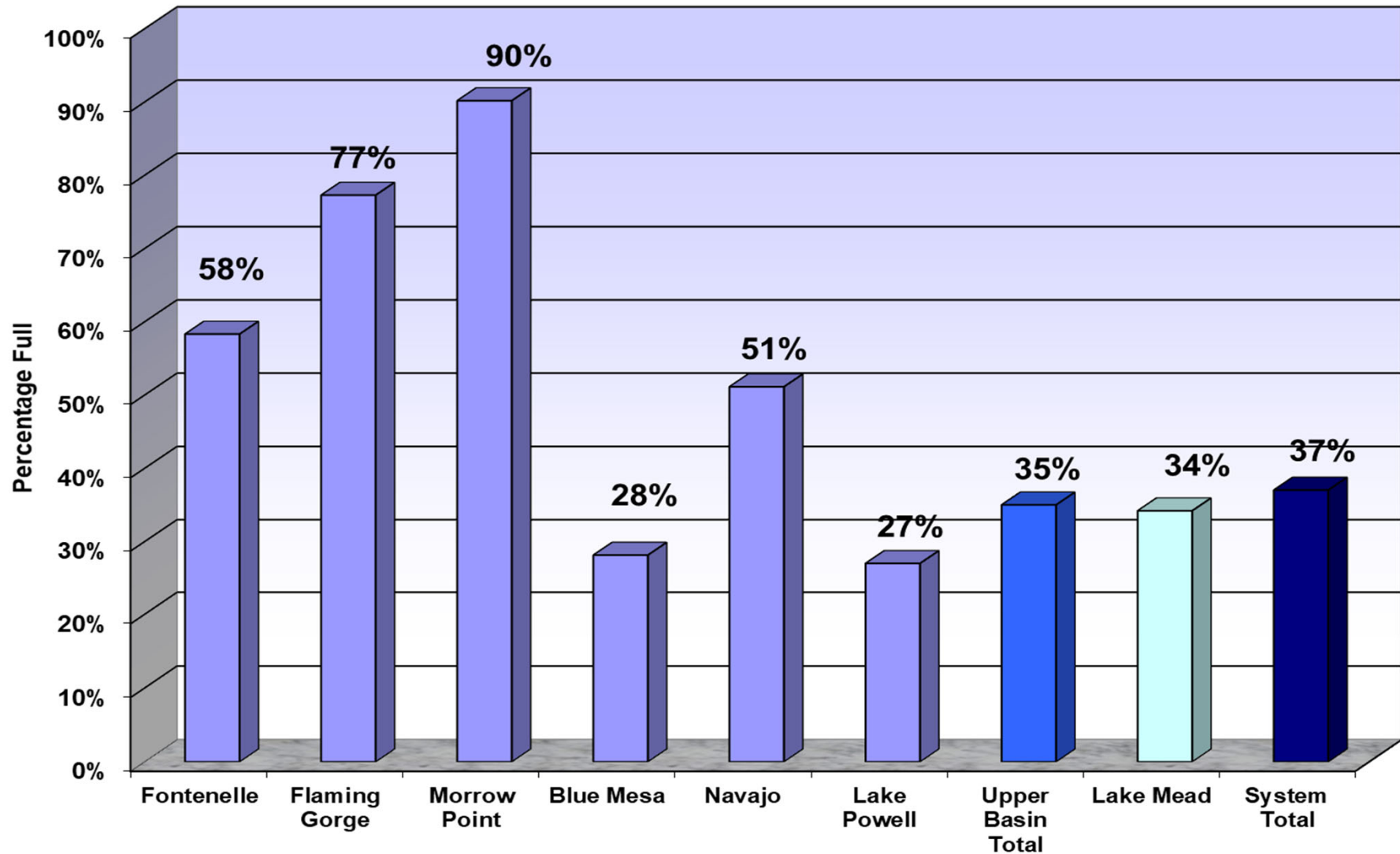
Normal = 10.8575 MAF
1981 to 2010

■ % Normal

Total System Contents

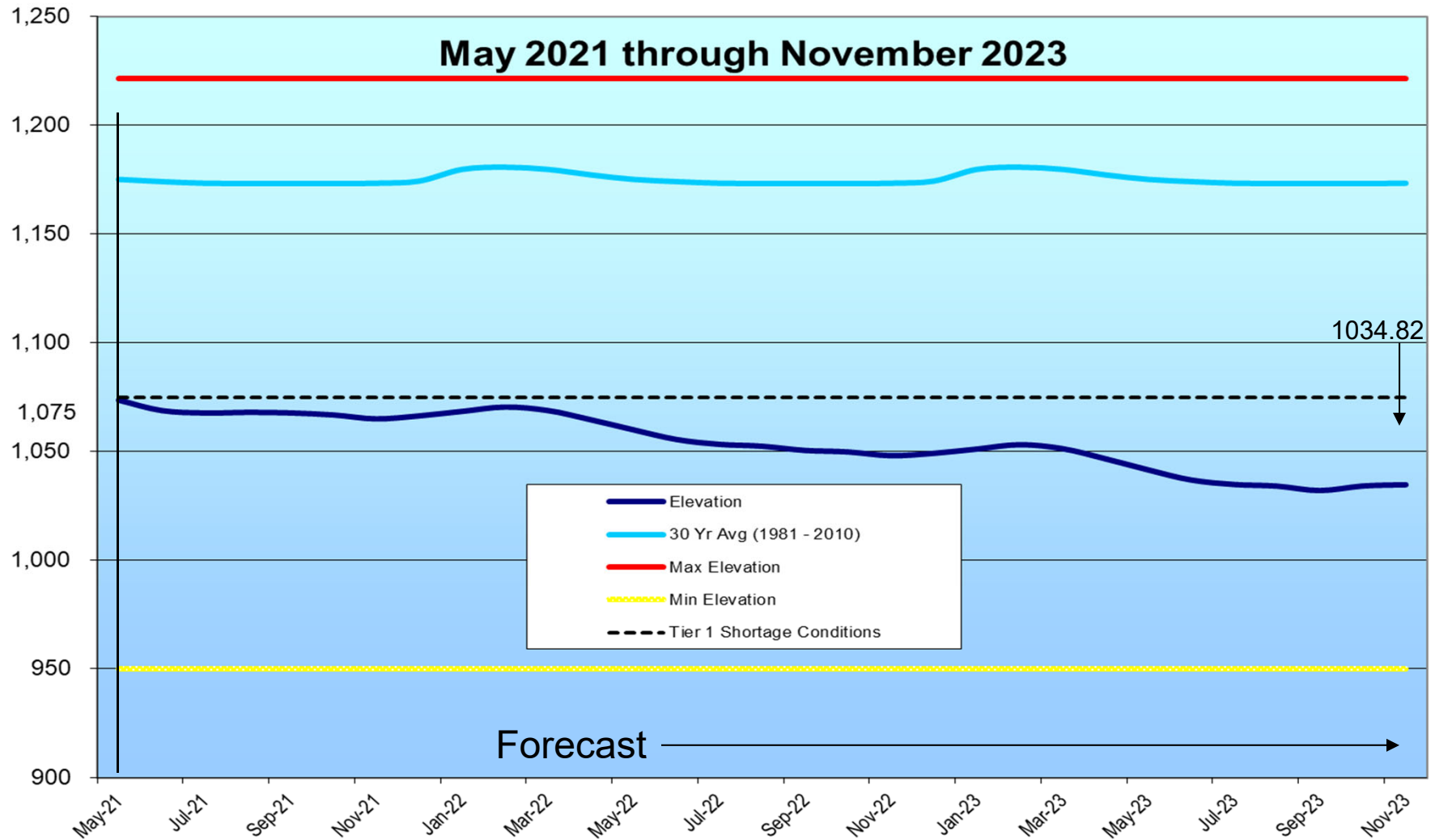


Reservoir and System Capacity as of 1/12/22



January 18, 2021

Lake Mead Elevation



Questions or Comments?
Call Sonseeahray Thayer at:
602-368-4265

For a copy of this report, go to the Power Authority website
at: <http://www.powerauthority.org/>
and click on downloads.